



OILFIELD SERVICE EQUIPMENT



**SUPERIOR DESIGN AND RELIABILITY
IMPROVING PROCESS EFFICIENCY
SAFETY ORIENTED**

1400 1st. Avenue, Harvey, LA 70058

Office: 1-504-828-6377

www.rdgulf.com



U.S. Small Business
Administration

WOSB CERTIFIED

**WOMEN
OWNED**

CERTIFIED BY | WOMEN'S BUSINESS ENTERPRISE
NATIONAL COUNCIL

WE CAN PROVIDE YOU WITH THE EQUIPMENT TO HELP IMPROVE YOUR PROCESS

Process Efficiency



efficiency



R and D Enterprises of Gulf Region, Inc.

Oil & Gas Industry

Equipment & Services

2 & 4-Pack Transport Racks & Manifold Racks
Standard Tote Tanks & Sight Glass Tote Tanks
Compartmentalized Storage Tanks (CST)
Single Compartment Circulation Tanks
Open Top Compartmentalized Mixing Tank
Quad Pack Delivery System (QPDS)
Single Tote Agitator System (STAS)
Bulk Bag Transporters (BBT)
Pipe Racks
Thread Protector Baskets
Offshore Baskets
Pallet Boxes & More...

NDT Inspection & Testing
Rigging Gear / Sling Inspection & Testing

ONSHORE AND OFFSHORE USE
Patented Equipment



TOTE TANKS – OVERVIEW



FEATURES

- **Certified Tanks Under UN**
- **Completely, Stainless Steel Construction**
- **Full Integration with our Patented Tote Tank Transporter Racks**
- Sweep 90° Discharge
- 2" Full Port Stainless Steel Discharge Valve
- 20 Degree Male Discharge Nipple with End Cap
- Reinforced Pad Eyes (see photos at right)
- 3" NPT 5-in-1 Combination Pressure/Vacuum is available
- Patented Anti-Sling Safety Top
- Quick Release Top Cover
- Forklift Pockets
- Bottom Ends Blocked to Prevent Oversized Forklift Damage
- Extended Legs for Easy Hose Connection



- **Reinforced Pad Eyes**
- **For Added Lifting Strength**

TOTE TANKS – SIGHT GLASS TOTE TANKS



Sight gauges were introduced to tote tanks in the early 1980's and for the past few decades have had problems with shipping, stacking, and handling of sight gauged totes.

This **internal design** allows for all the benefits of a tote tank sight gauge while avoiding the pitfalls of other models with external devices.

FEATURES

- UN/DOT compliant
- Heavy duty, 10 gauge 304 or 316 stainless steel construction
- Sloped bottom for virtually 100% discharge
- Top manway with EPDM gasket and bolted clamp ring
- Top fill fitting with fusible cap and lanyard
- Sight glass gauge with integral shut-off valves
- Bottom discharge with lockable, stainless steel ball valve
- Heavy duty lifting lugs/stackable leg positioners
- Patented



Sight Glass Totes shown in a DNV 4-Pack Manifold Transport Rack

TOTE TANKS - SAFETY AND TECHNOLOGY



Bottom Ends Blocked to Prevent Oversized Forklift Damage

R and D Offers the Latest Updates in Our Tote Tanks

- Our totes have 9" legs and 3 ½" lifting pad eyes above tank.
- The overall height of a 550 Gal. tote tank is 77".
- A 550 Gal. tote weighs around 800 lbs.
- The fill volume is 8.46 gallons per inch.
- The totes are 48" on the valve side and 42" across the front.
- All totes have 2" discharge valve, 3" fill cap on a 22" top.
- ***Forklift Pockets For Added Safety***

STAINLESS STEEL SAFETY TOPS



All totes are outfitted with an anti lid pull off safetycover.

Eliminates any sling from having contact with the tote tank lid.

- **Stainless Material** to Hold Shape
- **No Additional Clamping** or Hold Assembly
- **Prevents Sling From Pulling Off Tote Tank Lid**
- **Fits Flush** on top of Tote
- **Universal Fit** on all Tote Tanks
- **Patented**

TOTE TANKS – COMPETITIVE ADVANTAGE

See the Difference?



R and D Tote (left) – Competition (right)

R and D

Competition



Double-Walled
Reinforced Pad Eyes



Thin, inexpensive pad-eyes



All our totes have a 20
degrees discharge nipple to
allow easy hose attachment



Screw Off Elbow Increases
Chance of Leaking



Quick-release-lever
hold down ring
NO TOOLS REQUIRED



Old, Time-Consuming
Nut and Bolt Hold Down Ring

TOTE TANK CONSIGNMENT PROGRAM - ADVANTAGES

R and D Enterprises offers a tote tank consignment program to benefit your needs.

We take pride in our equipment safety and customer service, all while saving you time and money. Our tote tanks superior design construction and reliability are second to none.

Advantages :

- Reduced daily rate
- Inventory Tracking
- No cleaning expense after each use
- No product disposal after each use
- Reuse same tote for next job with same product
- No trucking back and forth to disposal and cleaning facility
- R and D Port Fourchon personnel available 24/7

Included :

- Tote tank, safety top, offshore certified sling and shackles
- Free small parts replacement (lid gasket, camlock gasket, vent gasket, lanyard wire, duplex sleeves, safety clips, rings, cotter pins and decals)
- NDT inspections and testing (pressure testing, ultrasonic wall thickness testing, liquid penetrant testing, load testing)
- Sling inspection and pull testing
- Tote tanks & slings, paper and/or electronic certifications (data plates & tags on all equipment as well)
- Deliveries and pick ups within Port Fourchon at no charge



REDUCE CRANE LIFTS - ENHANCE SAFETY

The following R and D Products not only increase efficiency but also enhance safety by reducing time-consuming and potentially hazardous crane lifts.

TRANSPORT RACKS

MANIFOLD RACKS

COMPARTMENTALIZED STORAGE TANK (CST)

BULK BAG TRANSPORTER

CIRCULATION TANKS

OPEN TOP COMPARTMENTALIZED MIXING TANK

QUAD PACK DELIVERY SYSTEM (QPDS)



Lifting Incidents



Bureau of
Safety and
Environmental
Enforcement



SAFETY

■ Reducing Lifting Incidents

BSEE's role in overseeing offshore energy operations is to ensure compliance with regulations, and to incentivize safer performance.

Lifting incidents are consistently the most frequently reported offshore incidents. Historically, about 22% of the total number of reported incidents are classified as crane or lifting incidents.

Contractor lifting injuries made up 86% of total reported lifting injuries, and since May of 2020, every lifting incident has involved a contract worker.

Since lifting incidents represent the potential for injury and significant environmental and/or safety impact, BSEE Director Angelle issued a challenge to a selected group of engineers, inspectors, and supervisors within BSEE's district, regional, and HQ offices to identify

potential immediate and longer-term mitigation measures for reducing the occurrences and severity of future lifting incidents by a target goal of 50% by 2021.

This Safe Lifting Initiative Team identified that most of the lifting incidents had a human component contributing to the event. Findings from the *ABS Group Crane Safety Assessment* (2015) reported that 60 to 80% of the mishaps involved human errors.

The Safe Lifting Initiative Team will employ the Safety



and Environmental Management Systems (SEMS) methodology to shift the focus of:

- ✓ BSEE, from evaluating and documenting the compliance state of an operator to assessing the safety performance of the operator.
- ✓ Industry, from merely having procedures to consistently following their procedures.

The quality and effectiveness of the operators' pre-work planning, specifically the safety discussions conducted before starting work, stands out as opportunities where work practices will likely improve safety performance.

Opportunities for BSEE include obtaining better data on lifting incident causal factors and regulatory clarification around crane inspections.

In October 2020, BSEE began reaching out to operators, requesting collaboration in achieving BSEE's 50% reduction goal by challenging their organizations, both employees and contractors, to identify opportunities to improve mechanical lifting operations.

SAFETY ENHANCEMENTS

Our patented 2 & 4-Pack Tote Tank Transport Racks are a great solution to the below concerns by BSEE. The safety cage design protects tote tanks from damage. The rack's built in drip pan would also contain leaks or spills.

Damage to Drain Nozzles on Tote Tanks Poses Leak Hazard

BSEE has become aware of multiple instances in the Gulf of Mexico region where tote tank drain nozzles have been damaged, leading to leaks and spills during lifting events. These incidents have raised significant safety concerns, and it is crucial that possible risks are promptly addressed to prevent further occurrences.

Recent incidents include:

Crane operator incident: A crane operator lifted a tote tank filled with diesel fuel that was surrounded by other items on the deck. The drain on the tote tank came into contact with another item on the deck during the lift, resulting in the drain breaking off. This incident led to a significant diesel fuel spill, affecting both the deck and the surrounding water.

Chemical injection skid incident: During lifting operations involving a fully loaded 550-gallon total tank, the tote tank's drain nozzle came into contact with a crossmember on the rack of a chemical injection skid. Upon inspection, it was discovered that the nozzle extended beyond the tank wall by at least one inch. This contact caused a crack in the weld of the drain nozzle, resulting in a minor leak.

These incidents underscore the critical need for heightened awareness and precautions during lifting operations involving tote tanks. To ensure the safety of personnel, equipment, and the environment, it is imperative to implement necessary measures to prevent similar occurrences in the future.



TRANSPORT RACKS – OVERVIEW

4-PACK RACK – Front View



4-PACK RACK – Top View



FEATURES



DNV

75% Less Lifts

Stackable

Totes do not need to be removed for filling/draining

Rack protects chemical and totes from damages during transport.

Rack is equipped with full drip pan.

Rack holds twice the fluid volume compared to an MPT, using the same deck space.

TRANSPORT RACKS – SAVE SPACE AND ELIMINATE DECK CLUTTER

BEFORE



AFTER



FEATURES

- Single Lift for Multiple Totes
- Safer and more efficient - Reduce Lifts by 50% to 75%
- FULL Integration with CST
- Prevents Damage to Tote with Safety Cage
- Full Drip Pan
- Holds Twice the Fluid Volume Compared to an MPT Using Same Deck Space
- Allows Combination of Fluid Transportation
- Load Tested and Weld Certified
- High Quality
- Forklift Accessible
- Can be loaded with Totes by forklift or crane
- DNV certified available
- Patented

Dimensions and Specs

4 pack transport racks: The racks are 9' long, 8' wide and 8' tall to the top of the stacking pads. The tare weight of a 4-Pack transporter is 4,200 lbs. All racks have solid drip pans and discharge ports. The racks are built to allow discharging fluid from a tote tank direct to the mud pits.

2 pack transport racks: The racks are 9' long, 4.5' wide and 8' tall to the top of the stacking pads. The tare weight of a 2-Pack transporter is 2,800 lbs. All racks have solid drip pans and discharge ports. The racks are built to allow discharging fluid from a tote tank direct to the mud pits.

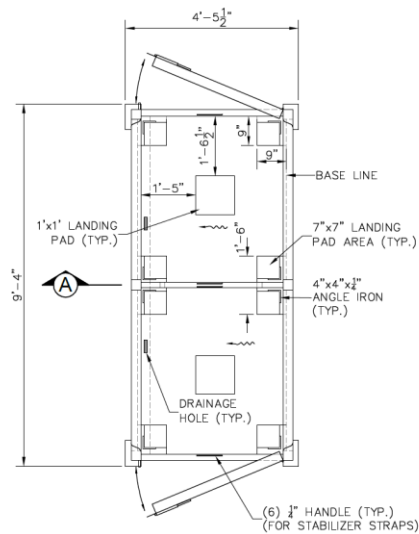
The tote does not have to be taken out of the rack to discharge the tote fluid. The 4-pack racks are designed to hold a maximum of 42,000 lbs. All racks have double doors on two ends to provide easy loading with a forklift or spotting a tote in the rack from a crane. The racks can be stacked which allows more deck space to be utilized on the rig.

TRANSPORT RACKS – SAVE SPACE



MECHANICAL DRAWING

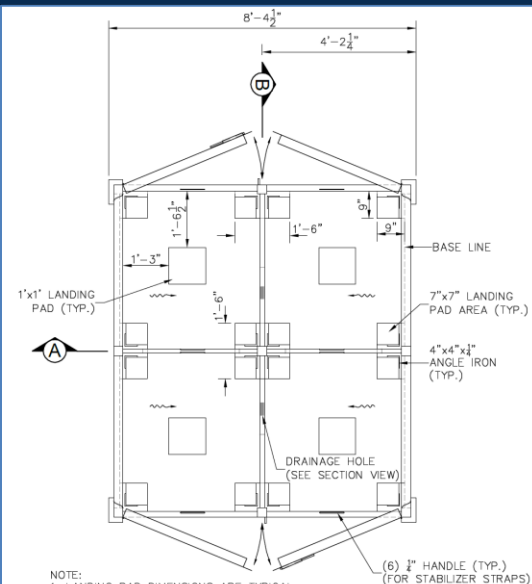
2-PACK RACK



NOTE:
1. LANDING PAD DIMENSIONS ARE TYPICAL.
2. ALL LANDING PADS ARE WELDED TO SHEET METAL FLOOR.

TOP VIEW

4-PACK RACK



NOTE:
1. LANDING PAD DIMENSIONS ARE TYPICAL.
2. ALL LANDING PADS ARE WELDED TO SHEET METAL FLOOR.

TOP VIEW

TRANSPORT RACKS – SAVE SPACE AND ELIMINATE DECK CLUTTER

DRIP PAN DRAIN SYSTEM

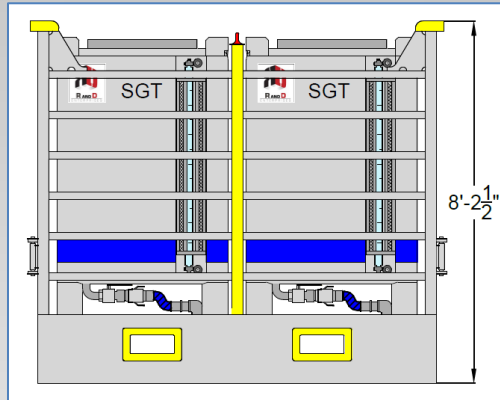


New Drain System: All racks have integrated stainless drip-pans with a 2" camlock/discharge to allow for easy cleanup after spills.

FALL PROTECTION AVAILABLE ON SELECT RACKS



MANIFOLD RACKS – OVERVIEW



FEATURES

- Rack gates for safe & quick access to load/unload tote tanks
- Stainless Manifold Pipe Plumbing
- Full Integration with CST
- Use in place of MPT's to minimize footprint and reduce crane lifts
- Load Tested and Weld Certified
- Fall protection available on select racks
- Stackable
- Forklift Accessible
- Patented



MANIFOLD RACKS – OVERVIEW



FEATURES

- **NEW Updated Chemical-Resistant 200psi Teflon-Lined Connections**
- Discharges Totes out of a 3" Discharge Line
- Totes are easily **Connected to Internal Manifold**
- Allowing all tote tanks to be drained simultaneously

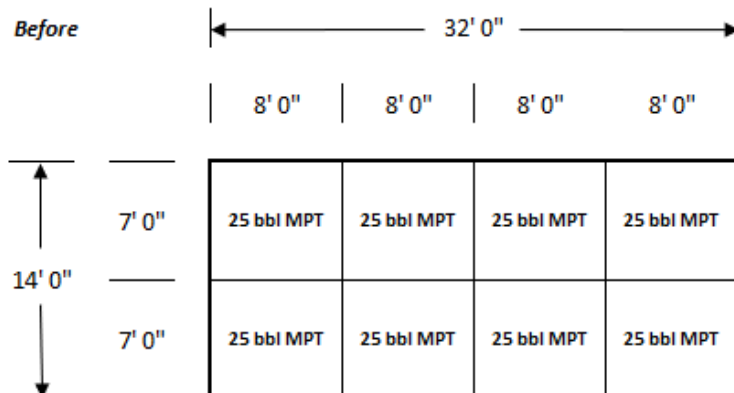
- Standard Manifold Rack tare weight = 4500 lbs.
- Dimensions are 9' Lx8' Wx8' H
- DNV Manifold Rack tare weight = 6000 lbs.
- Dimensions are 9'6" Lx8'6" Wx8'3" H
- 42,000 lbs. Gross Weight



Internal manifold hose routing view

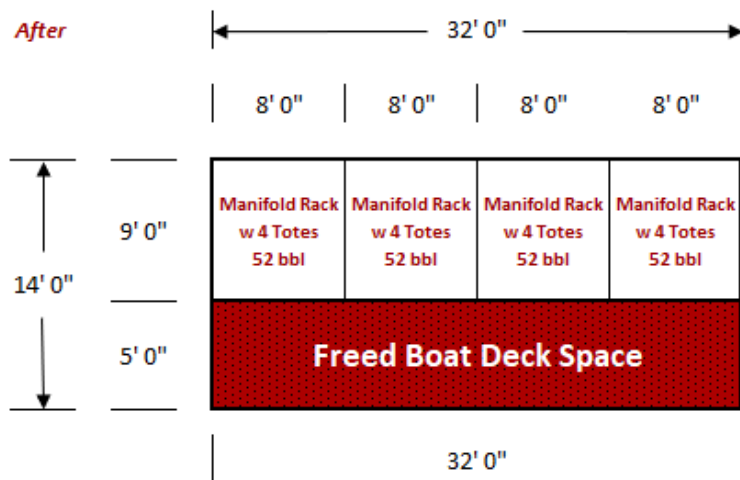
MANIFOLD RACKS (52 BBL) vs MPT (25 BBL)

200 bbls 14.2 CaBr stored in 8 each 25 bbl MPT's



8' x 7' : average dimensions of 25 bbl MPT's

208 bbls 14.2 CaBr stored in 4 each R and D 4 Pack Manifold Racks



Example where R and D's 4-Pack Manifold Racks with Totes provided Safety and Efficiency Enhancements vs 25 BBL MPT's, while freeing up valuable Deck Space.

R and D's 4-Pack Manifold Racks vs 25 bbl MPT's

4-Pack Manifold Rack

9'L x 8'W x 8'H ; Tare Weight = 4,500 lbs ; Max Gross Weight = 42,000 lbs

Standard 550 gal Tote

Tare Weight = 800 lbs each

4-Pack Manifold Rack with 4 ea. 550 gal Totes:

52 bbl ; 2,200 Gallons

Tare Weight = 7,700 lbs

Total Weight of 1 Rack and 4 Totes filled with 14.2 CaBr = 38,940 lbs per 52 bbls

Total Weight of 4 Racks and 16 Totes filled with 14.2 CaBr = 155,760 lbs per 208 bbls

Some Racks are Stackable when FULL = 104 bbl in an 8' x 9' Footprint

**Request Stackable in advance of ordering. Please check rig/boat floor weight load limit*

25 bbl MPT's :

Average dimensions of 25 bbl MPT = 8' x 7'

Average Tare Weight 4500 lbs

Average 25 bbl MPT filled with 14.2 CaBr = 19,410 lbs per 25 bbls (x2 = 38,820)

Average of 8 each 25 bbl MPT filled with 14.2 CaBr = 155,280 lbs per 200 bbls

MANIFOLD RACKS (52 BBL) vs MPT (25 BBL)

Comparisons		Difference
4 Pack Manifold Racks with Totes	25 bbl MPT's	Enhancements
208 bbls	200 bbls	8 more bbls
Footprint : 32' x 9' = 288 sq ft	Footprint : 32' x 14' = 448 sq ft	160 sq ft Freed Space
Total Weight : 155,760 lbs	Total Weight : 155,280 lbs	Negligible
Cost : ≈ \$100 each per day for 52 bbls	Ave Cost : \$? each per day for 50 bbls	
Cost : ≈ \$400 Total per day for 208 bbls	Ave Cost : \$? Total per day for 200 bbls	
Crane Lifts to move 52 bbls : 1	Crane Lifts to move 50 bbls : 2	50% less crane lifts
Total Crane Lifts to move 208 bbls : 16	Total Crane Lifts to move 200 bbls : 32	Land to Boat, Boat to Rig, Rig back to Boat, Boat to Land : Less crane lifts in Total : 16
* R and D can store unused product between wells free of charge, saving cleaning cost of 8 MPT's between well completions.		
* At the end of use, R and D will pick up and deliver totes to cleaning service of your choice, reducing transportation cost.		
* Use with R and D Sight Glass Totes, and eliminate tying off and climbing on top of MPT's to strap remaining liquid volumes.		
Summary : R and D's 4-Pack Manifold Racks with Totes use considerably less space to store the same volume as 25 bbl MPT's. R and D's racks also provide safety and efficiency enhancements, as well as reduce costs, by requiring 50% less crane lifts to load and off-load the boat, and/or rig; saving costly man-hours associated with crane operations and potential down time. R and D's agreement to store un-used or residual product between wells can provide savings by eliminating MPT cleaning costs, as well as transportation cost.		

COMPARTMENTALIZED STORAGE TANK (CST) – OVERVIEW



FEATURES

Partitioned Fluid Storage

Small Footprint

200-250 BBL Capacity

Easy Refill System

Reduce Crane Lifts

- **Built with 4 or 6 storage compartments.**
- Designed for the storage of bulk chemicals for drilling fluids.
- **Includes: CST, Landing Rack, Hoses and Accessories.**
- 200 BBL CST capacity or 250 BBL with 4-totes Rack on top CST.
- Our tote tanks combined allows for a quick-drain into the CST.
- **Coast Guard Certified** storage vessel.
- **PATENTED**
- Average Transport Dimensions: **10' W x 18' L x 11' H**
- Tare Weight: 28,000 lbs. Gross Weight: 150,000 lbs. or 175,000 lbs.



COMPARTMENTALIZED STORAGE TANK (CST) – ADVANTAGES



ADVANTAGES

Saves Deck Space

- 8' x 16' footprint holds 200 BBL of volume (10' x 18' with stairs and walkway).
- Takes the place of 15 totes (550 gallon) of volume in the same footprint.
- Eliminated deck clutter of Totes or MPT's

Reduces Crane Lifts

- Allows for 4 totes to be drained together and put right back on the boat.
- Avoids having to handle tote tanks multiple times before it is emptied.

Chemical Storage

- Each intake and discharge port is labeled and color coded.
- Up to six different drilling and completion fluid additives can be stored in one convenient location.
- All hoses use 2" cam lock fittings.
- Every tank has an inspection plate for measuring volume.
- Tanks are sloped on the bottom to drain to a minimal dead volume.
- Valves are protected by drip pan.

Health, Safety, and Environmental

- Intake and discharge valves have full drip pans to prevent spills and slip hazards.
- Tanks can be cleaned from the top without putting personnel in confined space.
- Built with OSHA approved stairs and walkway.
- By reducing the number of lifts needed for moving tote tanks, the risk to rig personnel is reduced.

COMPARTMENTALIZED STORAGE TANK (CST) – FEATURES

4-PACK TRANSPORT RACK ATOP CST ON RIG



DISCHARGE VALVES & DRIP PAN



Discharge valves have full drip pans to prevent spills and slip hazards.

CONSOLIDATE COMPARTMENTS



Discharge valves can be modified to consolidate compartments

ADDITIONAL INFORMATION

The tank measures 10' wide by 18' long. This accounts for the 2' stairway and drip pan in the front of the tank. The overall height with handrails and landing rack is 15' high. The tank weighs 28,000 lbs. with walkway, stairs, handrails and landing rack installed. Holds 200 BBL of fluid. The tank can hold up to a 14.5 lbs. fluid. There are from 1 to 6 compartments depending on configuration within the storage tank. **There are 2-pack or 4-pack transport racks with associated 13 BBL totes to refill tank.**

This is up to an additional 52 BBL of fluid; allowing the CST to become a 250 BBL tank.

All compartments are color coded and lettered. The tote tanks are designated per assigned compartment.



INVENTORY STRAPPING POINT

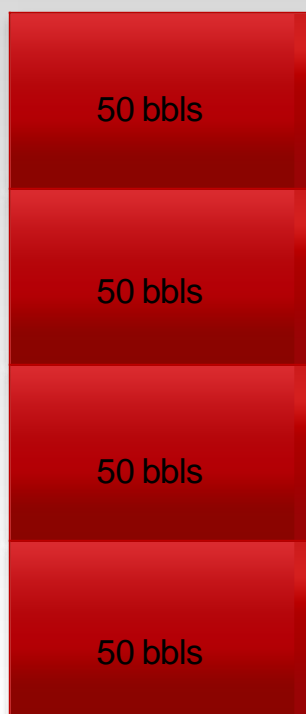


Every tank has a strapping port for measuring volume in each compartment.

COMPARTMENTALIZED STORAGE TANK (CST) – FEATURES

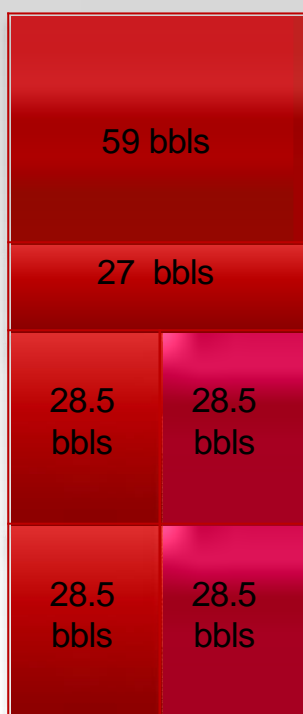
4-Compartment CST

- 200 bbls Total Capacity
4-Compartment



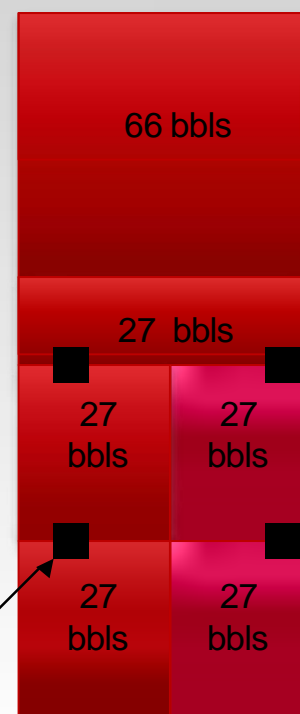
6-Compartment CST

- 200 bbls Total Capacity
6-Compartment



DNV Convertible 6-Compartment CST

- 200 bbls Total Capacity
- 3/4/5/6 - Compartment
(Convertible Volume) offering new
flexibility for your additives

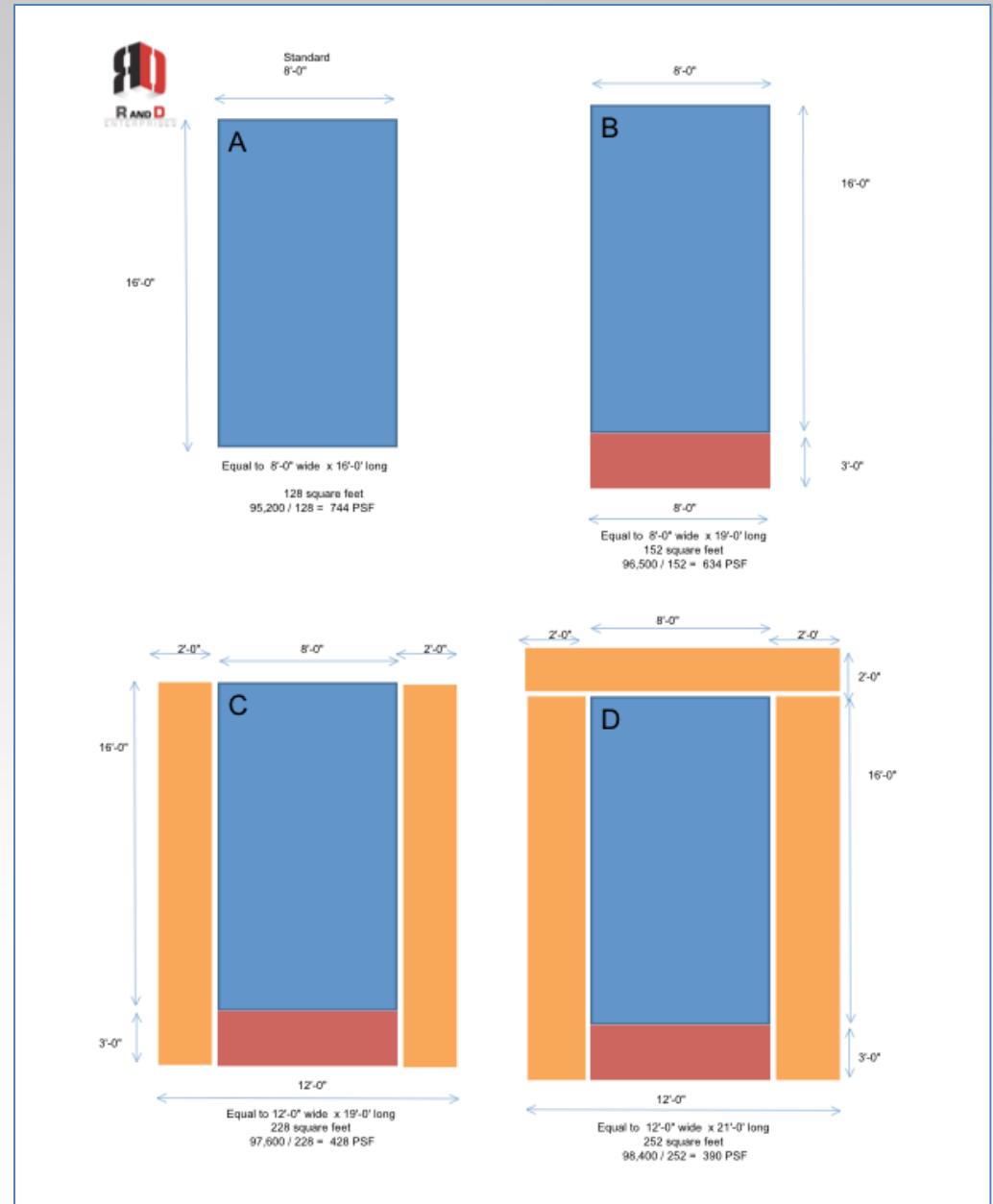


■ = Double flange stainless connectors allow tanks to be combined for additional chemical volume.

Note: 250 bbl capacity is possible with 4-totes carrying fluid plus the CST tank itself

COMPARTMENTALIZED STORAGE TANK (CST) – FEATURES

CST can be equipped with load distribution “wings” to lower the stress on the deck



COMPARTMENTALIZED STORAGE TANK (CST) – FEATURES

Subject: R&D CST

R&D has been involved in several operations in which we've used CST including drill ships, floaters and platform rigs. We see substantial benefits with regard to safety, cleanliness and volume tracking.

Without question, our drilling fluid specialists appreciate the ability to dump 2-4 totes of any one liquid additive at one time thereby reducing the number of times the crane needs to be dedicated to this task.

In addition to that,

- *The tanks make it much easier and safe to strap and keep good volume accounting.*
- *The drip pans help maintain the area clean and free from clutter.*
- *Supporting hoses and fittings come with the tank, there is no need to help acquire this separately.*

The focus is on improving process efficiency and safety. This demonstrates an effort to mitigate risks for what is usually a messy, repetitive process.

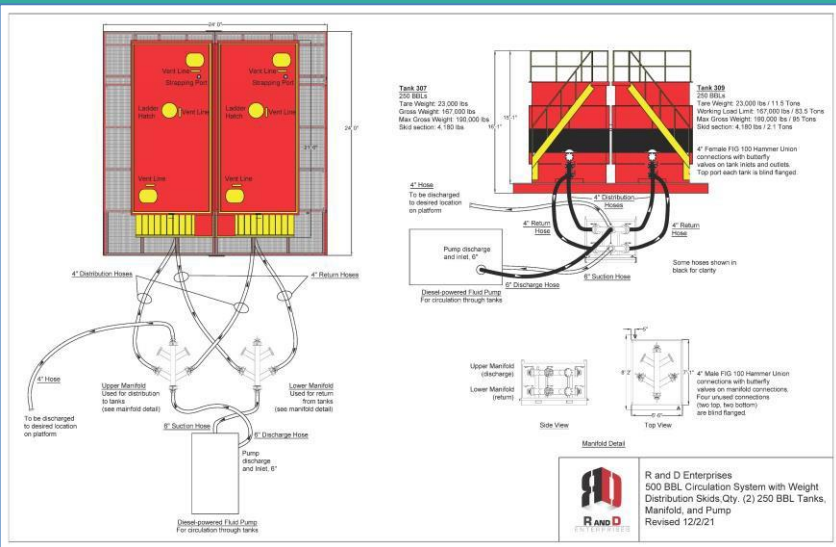
Custom Dual-Stairs Available (Optional)



Personnel available to assist with rig set up and installation if necessary



CIRCULATING STORAGE TANK SYSTEM – OVERVIEW



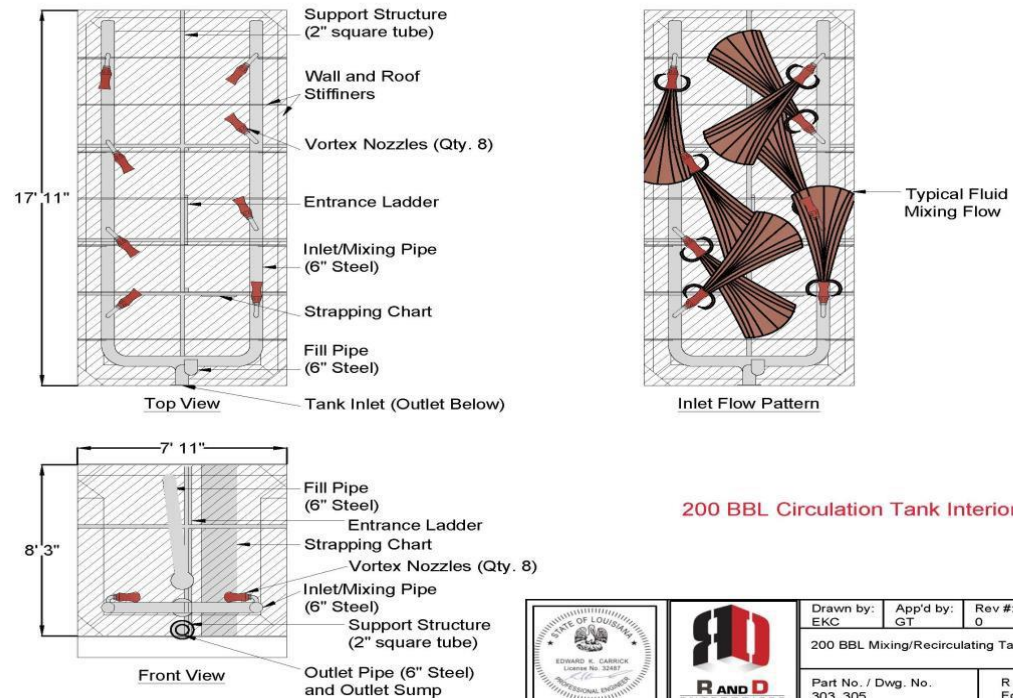
FEATURES

Single Compartment
Fluid Storage Tank
Circulation Optional
200-900 BBL Capacity

- **200 or 250 BBL Single compartment tank.**
- Designed for mixing of fluids.
- ***Interior is equipped with 6" pipping and vortex nozzles .***
- Combined tanks option for more volume.
- Optional weight distribution skids available.
- Dual manifold system is available for distribution of fluid.
- Can also be used for storage if mixing is not required.
- Pump is separate from unit.
- System can be modified per customers needs.
- Patented



CIRCULATION TANK SYSTEM – On Location & Interior



BULK BAG TRANSPORTER – OVERVIEW



FEATURES



Holds **FOUR** 4000# Bags

Smooth-Side Compartment
Eliminates Damage to Bags

Forklift Pockets, No Crane
Required

Stackable When Empty For
Easy Removal

Significantly Reduces Lifts



Options for Lift: Use Slings or
Two Choices of Forklift Pickup

Helps Eliminate Expensive Spills
and Cleanup

Stabilizing Attachment Points
Single lift for 16,000 lbs. of
material

Load Tested and Weld Certified,
Patented



QUAD PACK DELIVERY SYSTEM (QPDS) – OVERVIEW



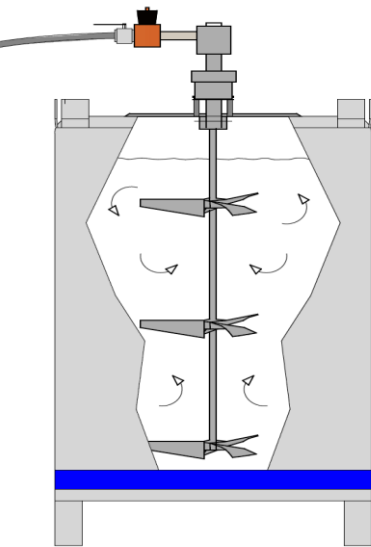
Customized for the Oilfield
Cementing totes

Only requires rig air to operate

Superior Design

Easier to use & safer

FEATURES



R and D Enterprises offers a delivery system for high viscosity polymer slurries which can be applied but not limited to completion and/or drilling applications.

The QPDS is comprised of up to three hydraulically powered self-contained mixing units, air-driven motors, transfer pumps, transfer hoses, and a working apparatus with stairs for storage and safe easy access to the upper areas of the tanks. All components are housed and transferred via our stackable patented quad-pack racks, reducing crane lifts.

The QPDS only needs access to rig air to operate the system and bulk delivery of product takes up less space than industry alternatives while minimizing waste and product loss.

The quad-pack racks can be double stacked with empty totes to conserve valuable rig space.

Application: Cross-Linked Polymers, Gravel Pack Screens, Sweeps, Pills, Displacement Spacers, HP/HT Wells

Effective in deepwater wells, offshore platforms, barges, and remote locations.



QUAD PACK DELIVERY SYSTEM (QPDS) – HIGHLIGHTS

Hoses connected to diaphragm pump



Pumps and Drive Units



Accessing the stairs
Storage for pumps and drive units



One Man Set-Up



Drive Units Move
Submersible Paddles



QUAD PACK DELIVERY SYSTEM (QPDS) – TECH SPECS

Two configurations available:

Two mixing units for polymer and one sight -glass tote for carrier fluid

Three mixing units for polymer

The working apparatus “stair system” has a storage compartment for storage of the motors and diaphragm pumps.

A pressurized pneumatic source “rig air” [110 to 130 psi (7.9 to 9.0 bar)] is connected to the hydraulic motor which is engaged to mix the polymer with carrier fluid by use of the transfer pumps and/or to agitate the slurry for delivery to the trip tank or cement unit.



Top View (motors engaged with rig air)

Dimensions and Design

The quad-pack racks are 9'6"L x 8'6"W x 8'3"H and the tare weight of the QPDS is approximately 10,200lbs (without polymer and/or carrier fluid). The quad-pack racks and transfer pumps have solid drip pans. The quad-pack racks are stackable with empty totes and have latched doors for each compartment.

The stairs have a storage compartment for the 100% air driven pumps and motors (shown right).

The drive motors are under 50 lbs., allowing for safe lifts.

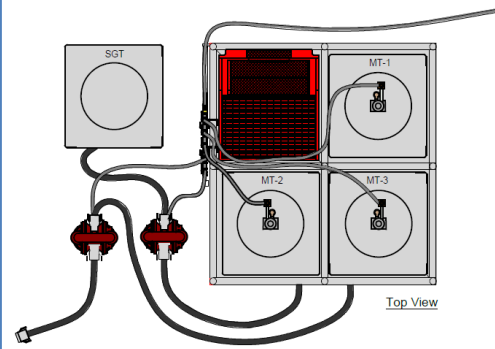
All units are load tested, weld certified, and forklift accessible.

Published patent on quad-pack rack, working platform, and sight-glass totes. Patent application in progress on process.



QPDS Parts (hoses, motors, regulator, mixing paddles & polypropylene diaphragm) pumps

QUAD PACK DELIVERY SYSTEM (QPDS) – Dual Manifold



Dual Manifold Rack Option

- Two 3" Full port inlet/outlet valves
- Manifold connects to each tote slot inside rack
- Transfer fluid through built in manifold system
- Air manifold for air hoses organization

SINGLE TOTE AGITATOR SYSTEM (STAS)

Smaller version of the QPDS

SATS Package Includes:

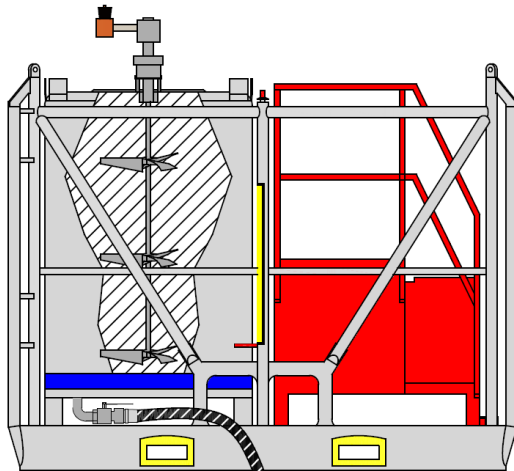
One – 550 Gal. Stainless Steel Tote with Agitator and Motor.
One – 2-Pack DNV Tote Transport Rack with Sling, Stairs, Pumps, Hoses, Valves & Back-up Motor.

Dimensions and Design

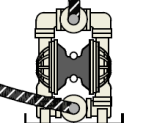
The racks are 9'6"L x 4'9-1/4"W x 7'7"H and the tare weight of the STAS is approximately 5,925lbs (without polymer and/or carrier fluid). The racks and transfer pumps have solid drip pans.



Agitator and motor installed to mix product.
Cutaway view of tote showing agitator.



Discharge to
desired location



Diaphragm Pump

R and D can provide labor to dump 5 gal buckets of HEC/ Spacer/Sweep into 550 Gal. Tote Tank:

- Per hour charge for labor, pumps, parts, maintenance, and machinery use with a 2hr minimum during regular operating hours, Monday thru Friday from 7am to 4pm.
- Per hour up-charge for after hours and weekends with a 4hr minimum.
- Customer to coordinate logistics and trucking fees of product to R and D Fourchon shop.
- R and D will require a minimum of 48hrs notice on all labor orders.



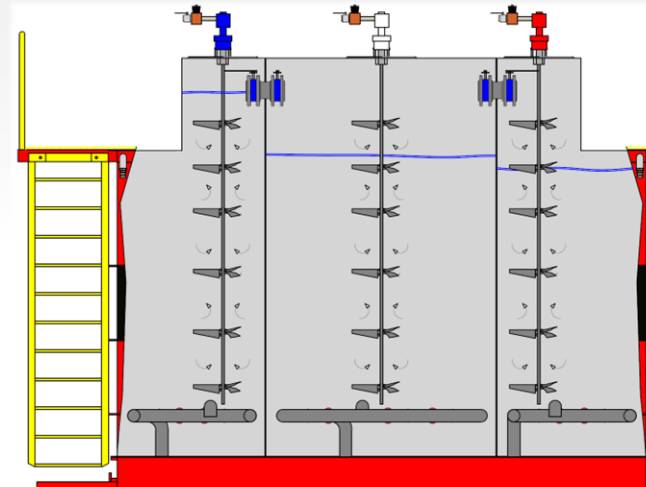
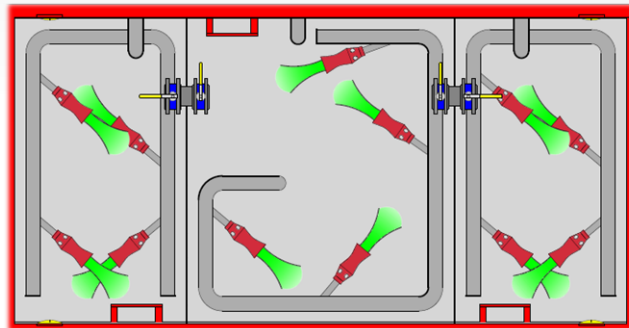
OPEN TOP COMPARTMENTALIZED MIXING TANK



R and D Enterprises of Gulf Region, Inc. designed a 250 BBL open top compartmentalized mixing tank that offers a large volume in a small footprint. Perfect solution for P&A projects with multiple fluid storage, sweep pill mixing and more. Tank is designed with 3-compartments with mixing capabilities in each compartment. All compartments can be equalized and/or segregated.

FEATURES & ADVANTAGES

- Patented superior design, reliable, efficient, safe and easy to operate.
- Partitioned open top tank is easy to fill utilizing a pump.
- All three compartments can be filled simultaneously.
- All compartments are color coded and numbered, keeping it simple operate.
- Circulation lines and agitator available in each compartment.
- Quick and easy installation air operated motors.
- Tank is designed for multiple use depending on your needs. Agitate fluid utilizing air operated motor, circulate fluid utilizing pump, or both options simultaneously. Can also use as bulk storage without mixing.
- Equalize or segregate up to three compartments.
- Can be gravity drained or by using a pump.
- Tank is sloped at the bottom to drain to a minimal dead volume.
- The Tank requires no additional movement. Once filled, it can administer up to 3 different chemicals at the turn of a valve. Time saved and keeps the deck and crew safer with less tank movement, less potential spills and accidents.



THREAD PROTECTOR BASKET

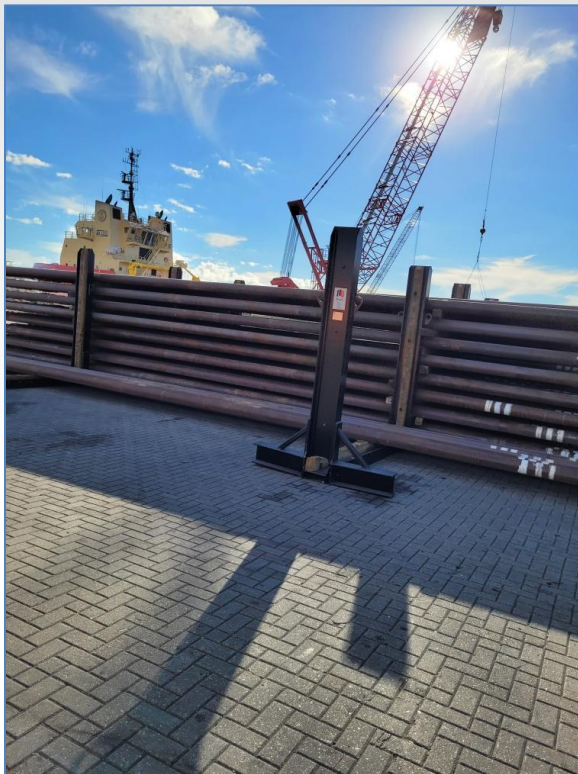
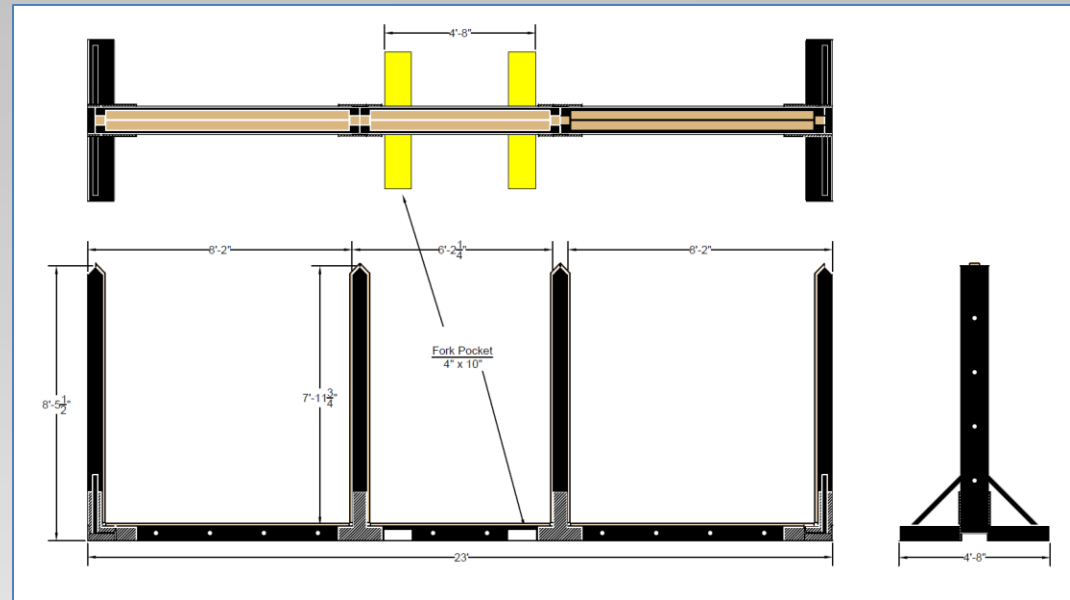


FEATURES:

- Opened top to drop in the drill pipe thread protectors.
- Optional back door available to insert thread protectors when volume is at lower level to reduce impact.
- Front lift door to remove thread protectors.
- Angled floor to slide thread protectors towards front door.
- Forklift pockets for easy movement within yard.
- Lifting pad eyes for offshore movement.
- Expanded raised face metal walls for visual of amount inside.
- Offshore compliant and certified.
- Holds and average of 200 sets (400 each) of the 5" thread protectors.
- Can hold various sizes and total amount would vary.

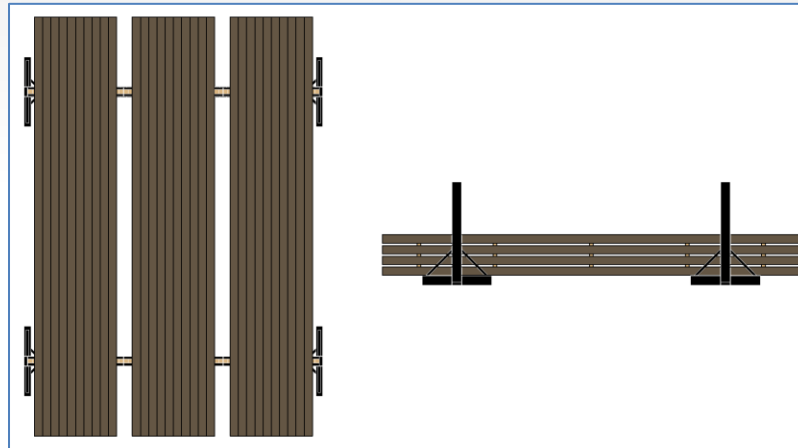


PIPE RACK



FEATURES:

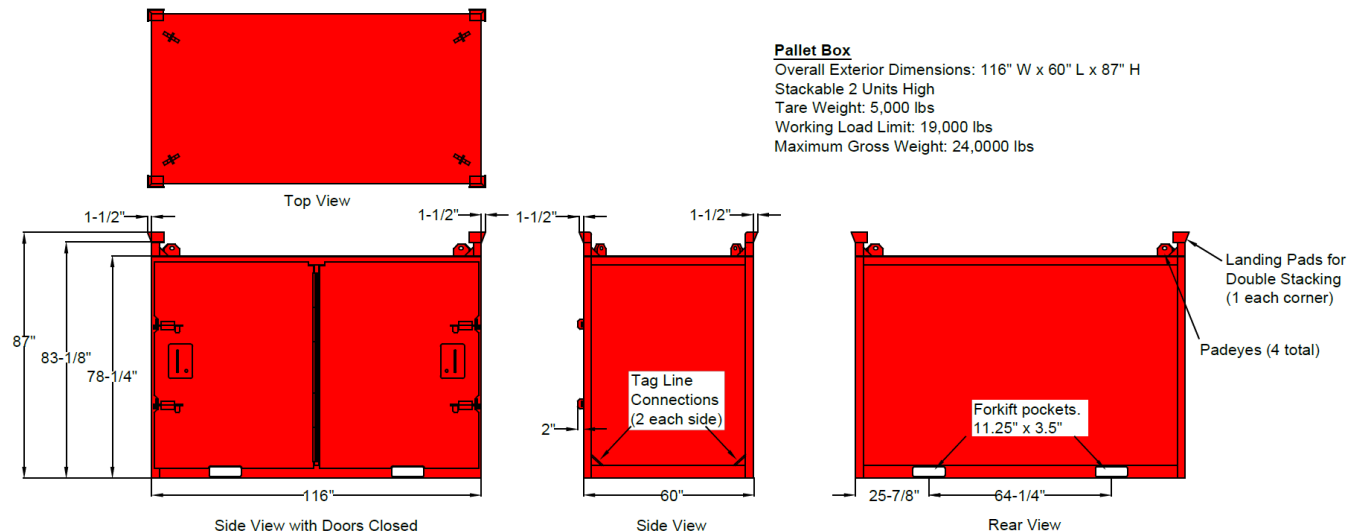
- Pipe rack is designed to store drill pipes on Shorebase.
- Equipped with forklift pockets to move around with ease.
- Designed with three slots to contain drill pipes.
- Wood supports within slots to keep drill pipes from contact with steel.
- Can hold an estimated 100 drill pipes depending on size.



PALLET BOX

FEATURES:

- Pallet boxes are ideal for transporting items offshore in a secured protected unit.
- Designed with two doors and a partition wall to allow separate items storage on each side.
- Equipped with forklift pockets.
- Stackable capabilities to help reduce footprint on rig deck or in yard.
- Can be used for parts storage.
- For Offshore and/or Shorebase use.

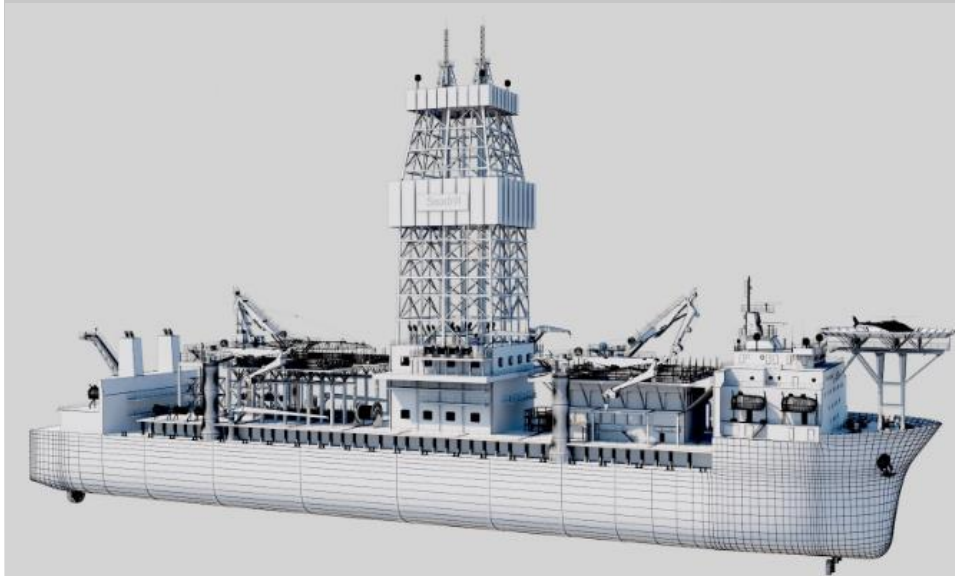


CUSTOMER HISTORY



ChemSpec International, L.L.C





CONTACT INFORMATION



**MADE
★ IN THE ★
USA**

RAND D
ENTERPRISES
OF GULF REGION INC.



OIL & GAS INDUSTRY

EQUIPMENT & SERVICES

www.rdgulf.com

Jeanette Robichaux

Director/President

jrobichaux@rdgulf.com

Mobile: 1-985-856-0070

Scott Robichaux

Sales Manager

srobichaux@rdgulf.com

Mobile: 1-985-991-6399

Gus Torres

Operations Manager

gtorres@rdgulf.com

Mobile: 1-504-975-1084

Office: 1-504-828-6377

